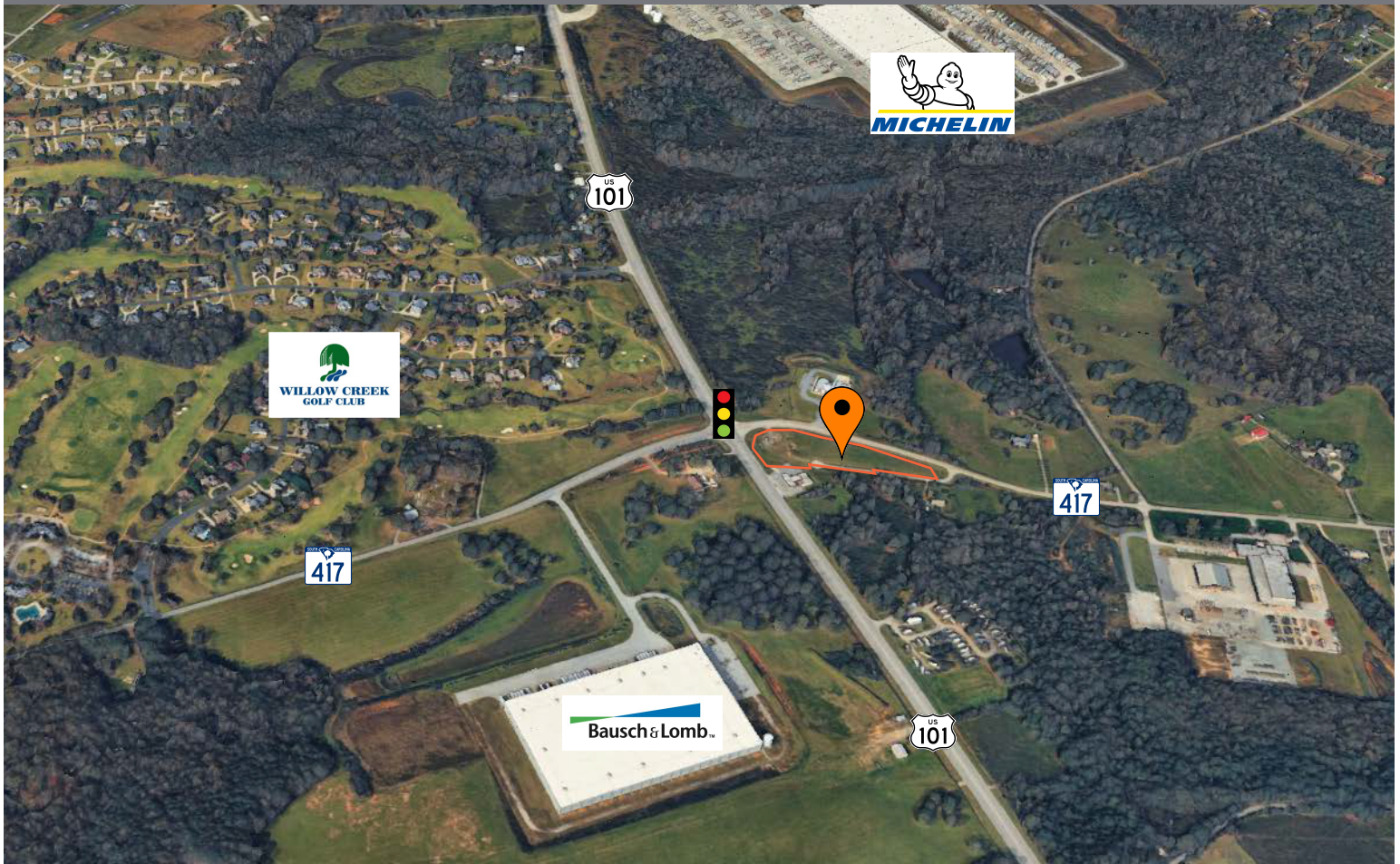


# Hwy 101 & Hwy 417 / Woodruff, SC



## Commercial Land For Sale

- Excellent retail location for:
  - Gas & Convenience
  - Restaurant
- ±2.8 Acres
- Located at the intersection of Hwy 101 & Hwy 417
- Signalized Intersection
- 6 miles from I-85
- ±15,000 AADT
- \$1,400,000





**JR Maehler**  
760-458-1902  
JR@RealServAdvisors.com

**David Black**  
864-230-7139  
Daveb@RealServAdvisors.com